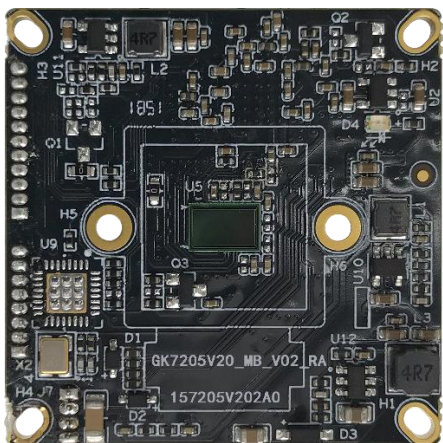


## 2MP Economic Single-Boards IP Camera Module Specification



### Order info

ZN- CM-GK200S1L-P

ZN- CM-GK200S1L-PZ

### Brief Introduction

2MP Single-boards IP module adopts Goke GK7205 V200 and 1/2.9" CMOS sensor, adopt advanced H.265 video encoding standard, the maximum resolution up to 1080P. It has one power interface ( extended POE), one IR\_CUT drive interface, one photosensitive resistance signal interface, one SMART IR interface. one network signal interface , one network light interface .POE support for option (-P) , one reset interface. Also it support one channel audio input, one channel audio output, one channel alarm input, one channel alarm output., one electric zoom interface (-Z model support) , one TTL interface ,one USB reserved interface. Together with our CMS and mobile Client, it can provide customers with system solutions.

### Features

- Standard 38mm\*38mm size, convenient and fast for assembling machine
- Support IR\_CUT (IR cut filter with auto switch)
- Maximum resolution 1920\*1080@25/30fps
- Support one channel audio input; one channel audio output; support two-way voice speaking
- Support one channel alarm input; one channel alarm out
- Support one electric zoom interface (-Z model support)
- Support one TTL interface

- Support one USB interface
- Support one Network lamp interface
- Support SMART IR
- Support Two-Stream technology.
- Support 3D DNR, DWDR
- Support P2P and cross-browser access.

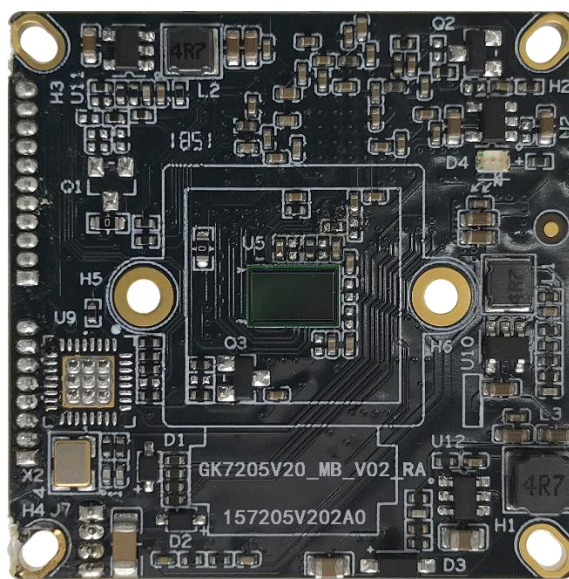
## Specification Table

<b>2MP Economic Single-Boards IP Camera Module</b>		
<b>Product model</b>	ZN- CM-GK200S1L-P、 ZN- CM-GK200S1L-PZ	
<b>System Structure</b>	DSP	Embedded RTOS, DSP(GK7205 V200)
	Sensor	1/2.9" CMOS sensor(GC2063)
<b>Video Encoding</b>	Video Encoding	H.265/ H.264High Profile/Main Profile/ Base Line Profile
	Maximum Image Output	Main stream: 1920*1080@25/30fps ; Auxiliary stream optional
	Streaming transmission	Two stream
	Video Bite rate	32Kbps~8MKbps
<b>Image Enhancement</b>	Min. illumination	Color <a href="#">0.1Lux@F1.2</a> (AGC ON) ; black and white <a href="#">0.01Lux@F1.2</a> (AGC ON)
	Electronic shutter	Auto (1/3 to 1/10000)
	Day/Night switch	color/B&W/Light sensitive switch/Mixed mode switch
	white balance	Auto / Lock white balance / fluorescent lamp /filament lamp /fluorescent lamp /HM
	DNR	2D and 3D DNR
	WDR	Support DWDR
	Video Adjust	Sharpness, Brightness, Saturation, Contrast, chroma adjustable
	image model	Transparent /real
	color pattern	Standard /gorgeous
	Corridor pattern	support
	backlight compensation	support
	FLC	support
	penetrating fog	support
Smart IR	support	
<b>Interfaces</b>	Signal interface	one photosensitive resistance signal interface, one IR_CUT drive interface support photo resistance signal links to IR-CUT and IR light
	ICR driving voltage	5V
	Smart IR	One port
	Reset interface	One port
	Audio interface	One audio in; One audio out
	Alarm interface	One alarm in; One alarm out

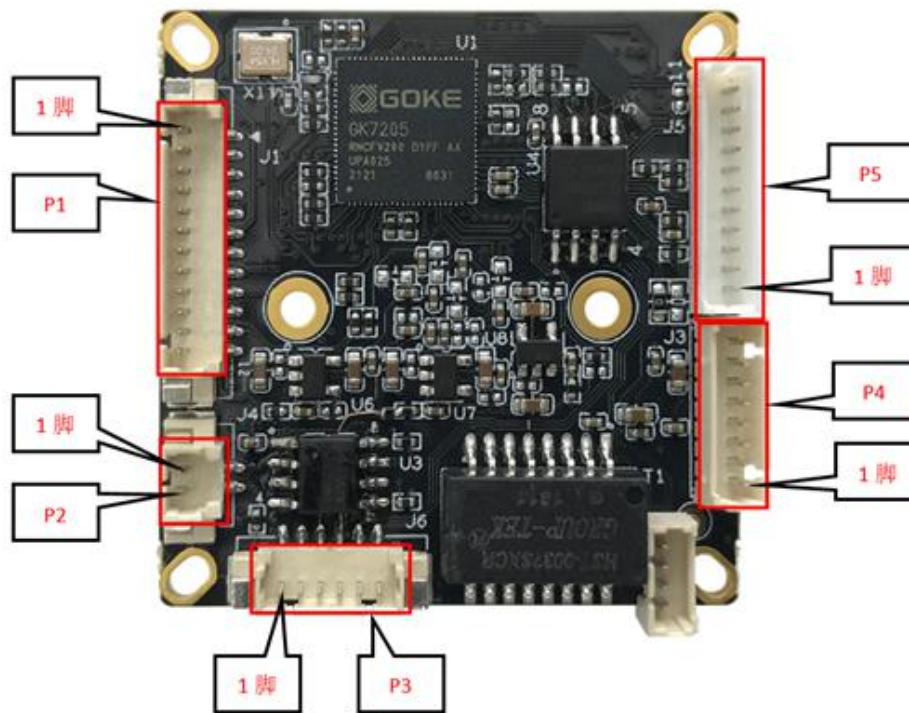
	electric zoom interface	One port (-Z model support)
	TTL interface	One port
	Power interface	One DC12V power input
	USB interface	One Port
	POE interface	One Extended Interface
	Network light interface	One Port
	Network interface	One RJ45 10/100M Port
	TF interface	One Port (External USB to TF board)
<b>Functions</b>	Motion detection	Multiple detection zones, variable sensitivity levels
	Capture function	JPEG, capture resolution is the max coding resolution
	Security	Password protection and water marker
	OSD	Support Channel Name and Time
	storage	Support FTP storage
	Smart alarm	Network abnormal, cover alarm etc.
	Mobile client	VSSMOBILE for both iPhone and Android system phone
	Protocol support	TCP/IP; UDP; HTTP; IGMP ; ICMP; DHCP; RTP/RTSP; DNS; DDNS; FTP; NTP; PPPOE; UPNP; SMTP; SNMP
	Interface protocol	ONVIF2.6/CGI
<b>General</b>	Power Supply	DC12V
	Power Consumption	<1W (without infrared lamp board)
	Lightning Protection	Power , network, POE all lightning protection, meets with standard GB/T17626.5, and IEC61000-4-5
	IR_CUT pitch	20mm
	Size	38*38 (mm) Single Board

## Interface Definition

### ZN- CM-GK200S1L-PZ Front Side:



## ZN- CM-GK200S1L-PZ Back Side:

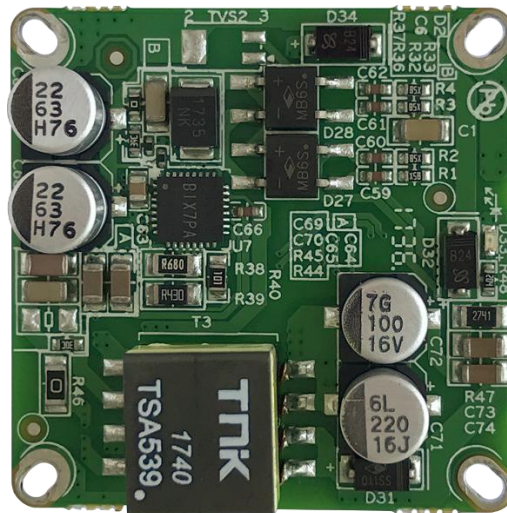


## Interface Definition

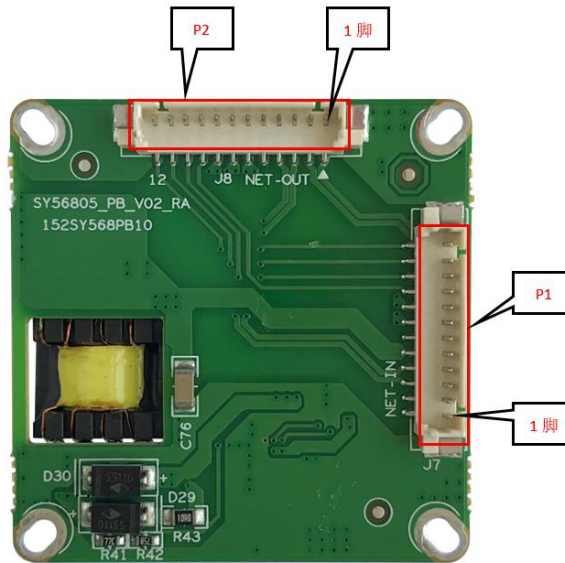
Boards	Marker	Mainboard serial number	Pin Definition	Pin Description	Function
Back side	P1	J1	1	ERXTN	Network signal
			2	ERXTP	
			3	ETXTN	
			4	ETXTP	
			5	GND	Ground
			6	+12V	12V
			7	GND_POE	POE connect ground
			8	48V_POE	48V POE
			9	GND	GND
			10	/	/
			11	LED 1	Network Light
			12	LED 0	
	P2	J4	1	DN-	IR_CUT
			2	DN+	
	P3	J6	1	+12V	12V
			2	GND	Ground
			3	IR_EN	IR lamp sync signal
			4	GBL_RST	reset
5			PWM_OUT0	IR light brightness adjustment	
6	PWM_OUT1				

	P4	J3	1	AOUT1	Electric zoom interface (-Z model support)	
			2	AOUT2		
			3	BOUT1		
			4	BOUT2		
			5	COUT1		
			6	COUT2		
			7	DOUT1		
			8	DOUT2		
		P5	J5	1	AC_LINE	Audio in
				2	GND	Ground
				3	AC_OUT	Audio out
4				UART1_RXD	TTL interface	
5				UART1_TXD		
6				ALARM_OUT	Alarm out	
7				ALARM_IN	Alarm in	
8				GND	Ground	
9				USB_DP	USB differential signal DP+	
10				USB_DM	USB differential signal DP-	
11				USB_VBUS	3.3V USB power	

### 7W POE Board front side



## 7W POE Board back side



## Interface Definition

Board	Marker	Mainboard serial number	Pin Definition	Pin Description	Function
Back side	P1	J7	1	ERXTN	network signal
			2	ERXTP	
			3	ETXTN	
			4	ETXTP	
			5	GND	Ground
			6	DC12_IN	12V input
			7	GND_POE2	POE2 connect ground
			8	48V_POE2	48V POE2
			9	GND	GND
			10	/	/
			11	LED 1	Network Light
			12	LED 0	
	P2	J8	1	NET0_RXN	network signal
			2	NET0_RXP	
			3	NET0_TXN	
			4	NET0_TXP	
			5	GND	Ground
			6	12V0_OUT	12V output
			7	GND_POE1	POE1 connect ground
			8	48V_POE1	48V POE1
			9	GND	GND
			10	/	/
			11	LED 1	Network Light

			12	LED 0	
--	--	--	----	-------	--